

Feroce 2011

Quick, safe and easy for preparation of the implant site

The first preparation of implant site is a delicate and not always easy operation: The rotary instruments included in the standard implant kits often result not very balanced and effective, therefore not suitable for obtaining a precise, quick and accurate initial cut on the cortical bone.

Butterfly burs "Feroce" 2011·023.CAL and 2011·023.CAXL are exclusive rotary instruments, projected by Butterfly Italia. They are the result of a long process of design and development, carried out by our company with the involvement of important Opinion Leaders who have been able to test and appreciate the quality of these rotary instruments.

Butterfly Feroce 2011 are initial burs for implantology with depth markings to 7, 8.5, 10, 11.5 and 13 mm, properly designed to enhance the preparation of implant tunnel and are compatible with most Implant Systems on the market.

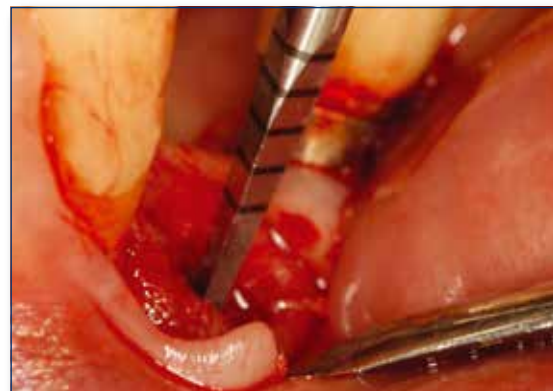
Compared to other lance-shaped burs on the market, Butterfly burs Feroce 2011 have a peculiarity that makes them unique. The special

geometry of the tip, just near the junction of the three cutting edges, creates a particular angle that allows the bur to penetrate with ease even in high density bone tissues.



Butterfly Feroce 2011 burs are made of special Steel which guarantees a precise and quick cut and long-lasting performances.

Moreover, they are perfectly balanced and have the proper elasticity to ensure the optimum first preparation of the implant site.

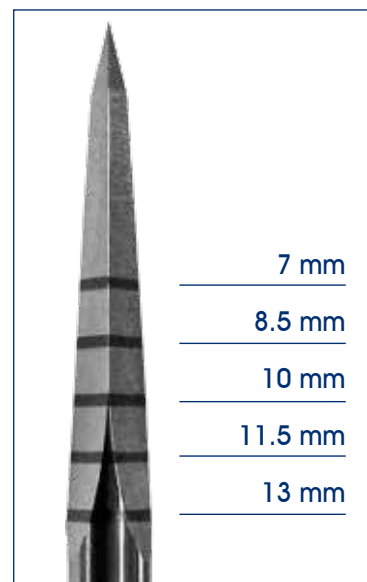
Butterfly Feroce 2011 with long shank CAXL are specific for post-extraction implant site preparation, moreover are ideal for use in sites where adjacent teeth are present. Feroce are also available with CAL shank for standard use.



2011 Feroce

L. mm	13.0
Ø ISO (1/10 mm)	023
CAL Shank	2011-023-205
CAXL Shank	2011-023-206



C33R

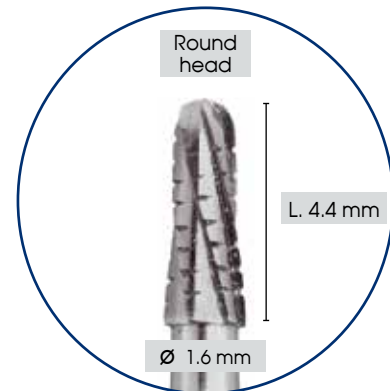
Carbide bur for odontotomies

The innovative Carbide bur C33R, designed by Butterfly Italia, is ideal for tooth section (even enamel) during extraction. The particular design and manufacturing of this bur have been realized especially upon request and thanks to the support of several Professionals, searching for an instrument with precise technical features.


C33R.016 is particularly indicated in odontotomy and extraction of included teeth, thanks to its extraordinary features:

- Its total length of 31 mm allows easy intervention even in posterior areas with difficult access and with included teeth;
- It has no welding joints, thus avoiding the risk of shank fracture during use;

- The working part is conical with round cutting head, in order to achieve a more effective cut while sectioning teeth; moreover, its short cutting length (only 4.4 mm) allows high precision, without compromising the soft tissues around the tooth.
- The helical cutting hedge grants excellent cutting properties on hard tissues too, resulting highly balanced without vibrations;
- The bur diameter of 1.6 mm guarantees the optimum section on the tooth, suitable for the insertion of elevators or other surgical instruments for tooth extraction.



C33R.016 with round head is available with FGXXL Shank.

C33R	Carbide, round head bur for odontotomy
	
L. mm	4.4
Ø ISO (1/10 mm)	016
FGXXL Shank	C33R.016.317

